



NEWSLETTER

Inside This Issue

Officer's Contact Info.	2
Chairs Contact Info	2
Section Chair Spotlight	3
Scribe's Report	3
Corporate Sponsors	4
32nd Golf Tournament	5

2014-15 CALENDAR

Sep. 16	Technical tour with Omnitrans
Oct. 16	Lunch meeting
Nov. 19	Joint meeting with SoCal
Dec. 10	Holiday Social
Jan. 21	Vendor Show
Feb. 19	Lunch meeting
Mar. 20	Golf Tournament
Apr. 16	Lunch meeting
May 21	Student Presentation Meeting
Jun. 18	Business Meeting

MARCH MEETING

Schedule

7:00 am	Driving Range Practice
8:00 am	Shotgun Start
1:00 pm	Serve Lunch
3:00 pm	Adjourn

MENU

Lunch will consist of a BBQ buffet that will include tri-tip, chicken, chili beans, corn on the cob, assorted salads, and garlic bread.

MARCH MEETING

RSBITE

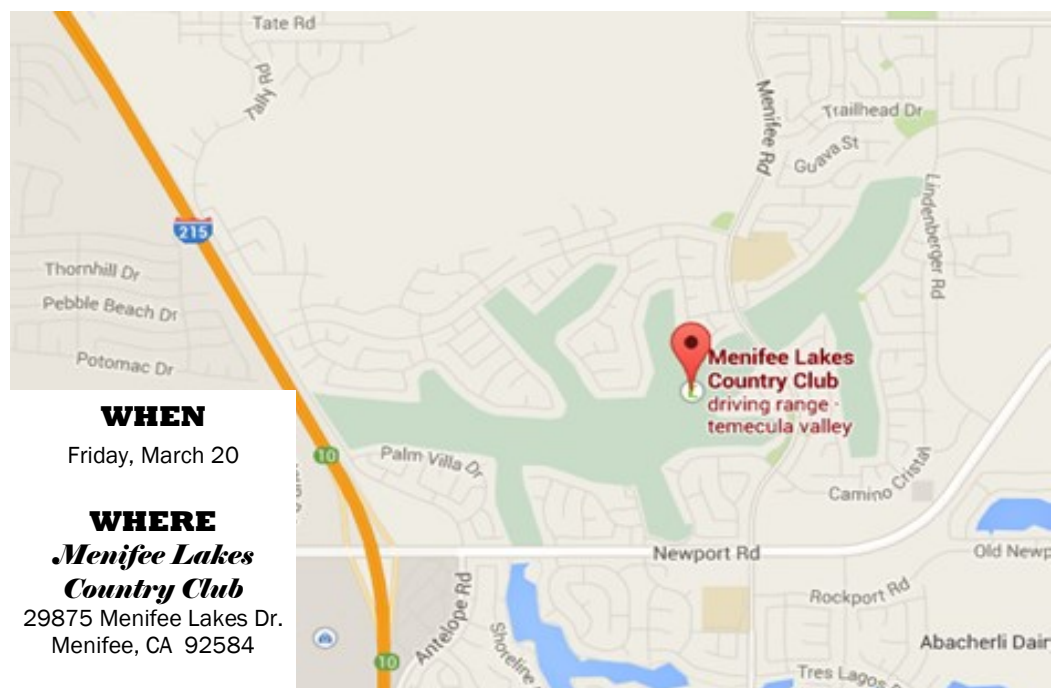
32ND GOLF TOURNAMENT

The RSBITE March meeting will be the 32nd RSBITE Golf tournament at Menifee Lakes Country Club. The event is **March 20th and starts at 8 a.m.** You do not need to be a member to participate so invite anyone who plays golf, enjoys good food, and likes to have a good time. For those who would like to attend only the lunch buffet please contact JR Morgan (951) 780-8435, the lunch will begin at about 1 p.m. The cost just for lunch is \$26.00.

The donation of raffle prizes is always appreciated. Please bring the day of the event. If you can donate items for the goodie bags to be handed out when golfers check in please coordinate with Dennis Acuna at (951) 955-6820.

More information about the golf tournament can be found on the golf flyer on page 5.

Early bird registration ends March 9th and all team registrations need to be received by March 13th.



WHEN

Friday, March 20

WHERE

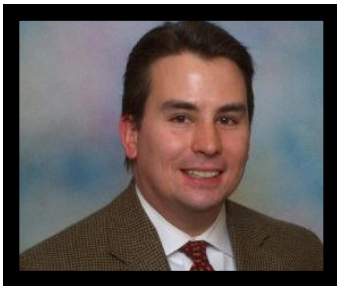
Menifee Lakes Country Club

29875 Menifee Lakes Dr.
Menifee, CA 92584

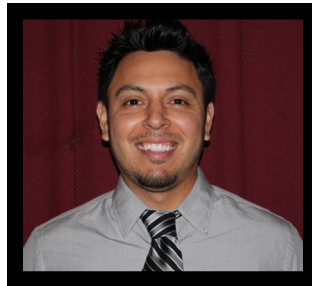
2014-2015 RSBITE SECTION OFFICERS

PRESIDENT :

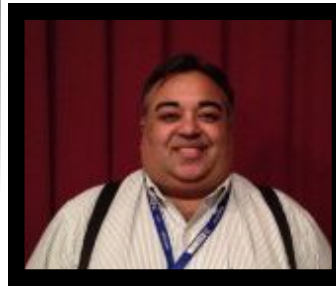
JOHN KERENYI, P.E.
City of Moreno Valley
(951) 413-3199
johnk@moval.org

**VICE PRESIDENT:**

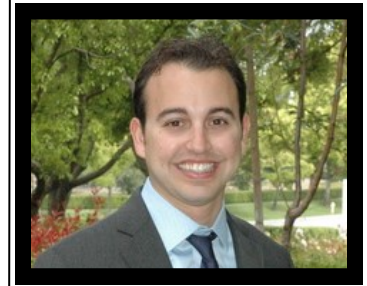
GIANFRANCO LAURIE, P.E., T.E.
City of Rialto
(909) 820-2531
glaurie@rialtoca.gov

**SECRETARY/TREASURER:**

DR. MOHAMMAD QURESHI, P.E., T.E.
County of San Bernardino
(909) 387-8186
drq@dpw.sbcounty.gov

**PAST PRESIDENT:**

JONATHAN HOFERT, P.E., T.E., PTOE
Parsons Brinckerhoff
(909) 276-4313
hofertja@pbworld.com



2014-2015 RSBITE SECTION CHAIRS

SOCIAL CHAIRS

JR MORGAN
County of Riverside –Retired
Home Phone: (951) 780-8435
jrns Shirley@charter.net

DENNIS ACUNA, P.E.
County of Riverside Transportation
Office Phone: (951) 955-6820
dacuna@rctlma.org

**STUDENT CHAPTER ADVISOR
& SCRIBE**

DANIEL DAVID, E.I.T.
RBF Consulting
Office Phone: (909) 974-4939
daniel.david@mbakerintl.com

PROGRAM CHAIR

VICTORIA DEWEY
Parsons Brinckerhoff
Office Phone: (951) 279-1779
DeweyV@pbworld.com

WORKSHOP CHAIR

JONATHAN WU, P.E., PMP
City of Fontana Engineering Dept.
Office Phone: (909) 350-6724
jwu@fontana.org

WEBMASTER

NATHAN MUSTAFA, P.E.
City of Riverside
Office Phone: (951) 826-2251
nmustafa@riversideca.gov

NEWSLETTER CHAIRS

TRISHA MUNOZ, E.I.T
Hall & Foreman, Inc.
Office Phone: (760) 524-9120
tmunoz@hfinc.com

ANDREW OSAKI, E.I.T.

KOA Corporation
Office Phone: (909) 890-9693
aosaki@koacorp.com

HISTORIAN

BRETT CRAIG
Riverside County Transportation Dept.
Office Phone: (951) 955-6819
brccraig@rctlma.org

MEMBERSHIP CHAIR

GRACE CHENG, E.I.T.
Albert Webb & Associates
Office Phone: (951) 320-6038
Grace.cheng@webbassociates.com

LEGISLATIVE CHAIRS

ANWAR WAGDY, P.E.
Albert Grover & Associates
Office Phone: (951) 536-4722
awag007@yahoo.com

VIKKI LI, P.E., T.E.

City of Corona Public Works
Office Phone: (951) 817-5708
Vikki.Li@ci.corona.ca.us

SECTION CHAIR SPOTLIGHT

Andrew Osaki is the newest addition to our family of support chairs. Andrew graduated from Cal Poly Pomona in 2013 with his BS in Civil Engineering and is currently employed as an Assistant Engineer at KOA Corporation in Ontario. As a student at Cal Poly Pomona he attended ITE meetings and began attending RSBITE meetings shortly after being hired by KOA Corporation. Andrew enjoys being active and playing many different types of sports. Some of the sports he is active in are tennis, basketball, and swimming. Andrew will be joining RSBITE as the Co-Newsletter Chair and will be helping Trisha prepare the monthly RSBITE newsletter. We are glad to include him in our team and look forward to a successful year.



SCRIBE'S REPORT

This month RSBITE deviated from the usual monthly luncheon and hosted a Traffic workshop at the County of San Bernardino. There were approximately 47 participants with lunch provided by Classy Cafe. The workshop was comprised with a series of events, starting with a Webinar on Traffic Calming presented by Nazir Lalani and hosted by the County of San Bernardino which purchased a site registration. The second part of the workshop was a synopsis on the recent changes in the California Manual on Uniform Traffic Control Devices (CA MUTCD) provided by Mr. Rock Miller. The presentation was later followed up with Q&A session consisting of questions submitted by RSBITE members prior to the workshop.



Mr. Miller provided us with a wealth of knowledge on the recent changes in the CA MUTCD by pin-pointing where all of the revisions took place within the manual and giving insight and reasoning for the updates. Mr. Miller mentioned that the majority of the changes were minor revisions to definitions, standards terms, and styles throughout the manual. Mr. Miller estimated a bit over 100 style changes to the recent 2014 CA MUTCD. There were also revisions to regulatory and warning signage. Some of the changes on regulatory signs include the permission to use red LEDs on "Do Not Enter" (R5-1) and "Wrong Way" (R5-1a) signs. There were also modifications to Electric Vehicle (EV) charging station signs that allow for signage to specifically navigate EVs to charging stations on the freeways. Mr. Miller explained the additional warning signs that the CA MUTCD added for speed bumps that are able to warn vehicles for an entire area, eliminating the requirement to place a warning sign near every speed bump. Another warning sign added to the 2C section is a pictorial sign for falling rocks areas, eliminating the use of the "falling rocks" warning that contains only words. Mr. Miller reminded the group of the change in the speed limit procedures that requires speed limits to be set to the nearest 5 mph increment, rather than always rounding down. Mr. Miller continued on to explain changes various in sections throughout the CA MUTCD including the freeway guide signs, markings, traffic signal needs, pedestrian control features, and temporary traffic control.

The workshop was concluded with a Q&A session where attendees were able to chime in and pose questions discussing the recent changes in the CA MUTCD and traffic calming. The various topics and questions from the members made this workshop a success by spreading exclusive knowledge and information in our beloved transportation industry. Until next time!

-Daniel
RSBITE Reporting Scribe

CORPORATE SPONSORS

Platinum Level



Silver Level





The Institute of Transportation Engineers
 Riverside – San Bernardino Section
 Invites you to play in our

32nd ANNUAL GOLF TOURNAMENT

When: Friday, March 20, 2015 at 8:00 am- Shotgun Start, Scramble Format

Where: Menifee Lakes Country Club
 29875 Menifee Lakes Dr. Menifee, CA (951) 672-4824
 I-215 to Newport Rd. East on Newport Rd to Menifee Lakes Dr.
 WWW.Menifee-Lakes.com

Who: Everyone is welcome to play. You need not be a member to participate.
 Dress Code: Slacks or Bermuda-length shorts only. NO Denim. Shirts must have collars.

Cost: \$75- Early bird special if received by Monday March 9, 2015
 \$85- if received by deadline date Friday March 13, 2015

Golfing Awards and Raffle prizes will be made possible by money and items donated by our vendor and consultant friends. If you would like to make a donation or you have any questions, please contact JR Morgan, at (951) 780-8435.



Make checks payable to “RSBITE” and send to:

JR Morgan
 7182 Westport St.
 Riverside, CA 92506

Name:		Phone:	
Address:		City:	Zip:
Company:			
Name:	Name:	Name:	
Company:	Company:	Company:	

2015 ITE WESTERN DISTRICT MEETING

SAVE THE DATE!

LOCATION:

Planet Hollywood Resort
in Las Vegas

DATE:

Sunday, July 19 –
Wednesday, July 22, 2015



www.lvite2015.com





Richard T. Romer Student Endowment Fund
c/o San Francisco Municipal Transportation Agency
One South Van Ness Avenue, Seventh Floor
San Francisco, CA 94103

March 1, 2015

Dear ITE Riverside-San Bernardino Section Members:

As the Western District's Endowment Fund Committee Chair, I would like to invite you to make a contribution to the Richard T. Romer Student Endowment Fund. In past years, your Section and its members have been strong supporters of the Student Endowment Fund, and I hope that this relationship continues.

The Endowment Fund reached the \$400,000 milestone after the 2014 District Annual Meeting thanks to the generosity of groups such as yours, and we are quickly progressing towards our \$500,000 goal. Since last year, we have been funding all of the Western District Student Initiatives from the Student Endowment Fund. As such, it is critical that we continue to have the support of our Sections and members to ensure that we can maintain our current level of student funding while still striving to meet our ultimate goal for the Endowment Fund.

To that end, I kindly ask that you consider continuing your Section's support of the Richard T. Romer Student Endowment Fund with a contribution in 2015 as well as the years to come. With only \$100,000 more before we reach our goal, every contribution matters. Together we can ensure the continuation and expansion of our student initiatives to develop our students into well-trained, well-educated, and enthusiastic ITE professionals.

More information about the Endowment Fund is available at westernite.org/endowment-fund-2/.

Sincerely,

Kimberly Leung
Endowment Fund Committee Chair
kimberly.leung@sfmta.com